

CHLORO-FLUORO-CARBONS ANALYSIS

Technique : Micro-GC

Column : OV-1

Carrier gas : Helium

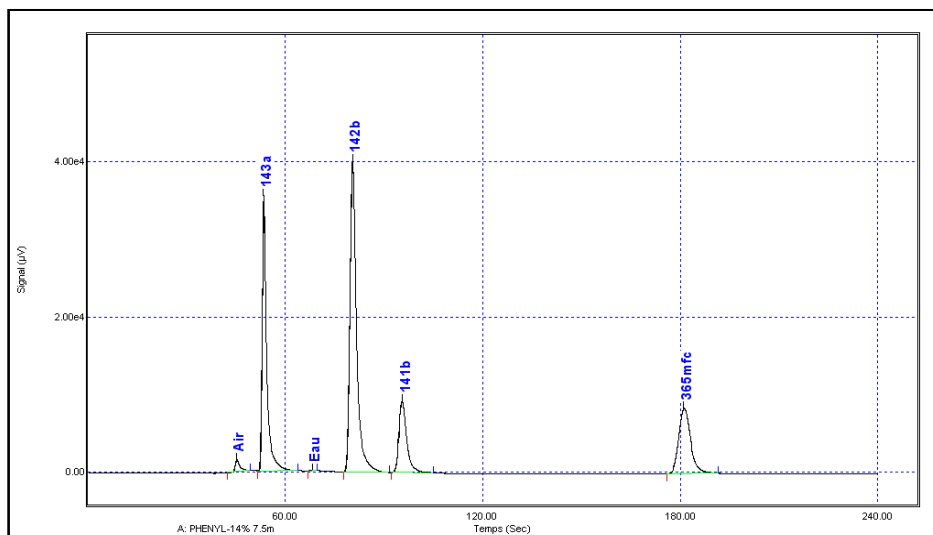
Injector : Variable volume

Column temperature : 110°C

Injection time : 5 ms

Column pressure : 20 psi

μTCD sensitivity : Standard



Technique : Micro-GC

Column : Al₂O₃

Carrier gas : Helium

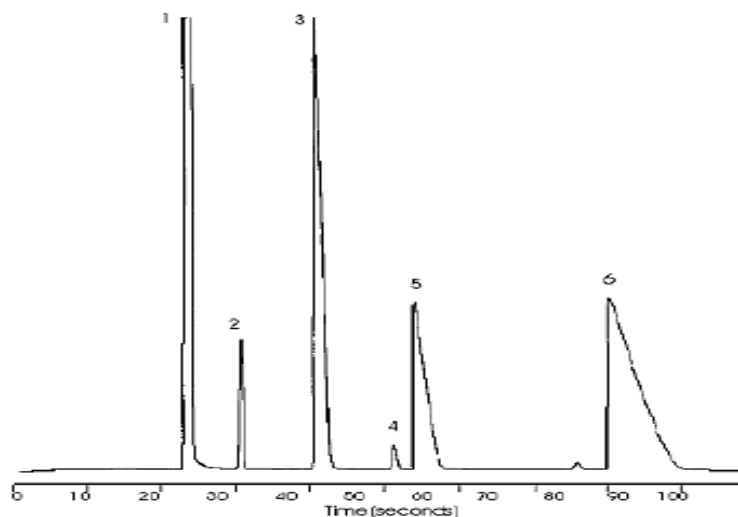
Injector : Variable volume

Column temperature : 60°C

Injection time : 70°C, 50 ms

Column pressure : 30 psi

μTCD sensitivity : Standard



Peak identification	1	Air
	2	Fréon 12
	3	Fréon 22
	4	Fréon 134a
	5	Fréon 152a
	6	Fréon 124

More information : www.sra-instruments.com