

CARBON DIOXIDE AND LIGHT C2 HYDROCARBONS ANALYSIS

Technique : Micro-GC

Column : PoraPlot U

Carrier gas : Helium

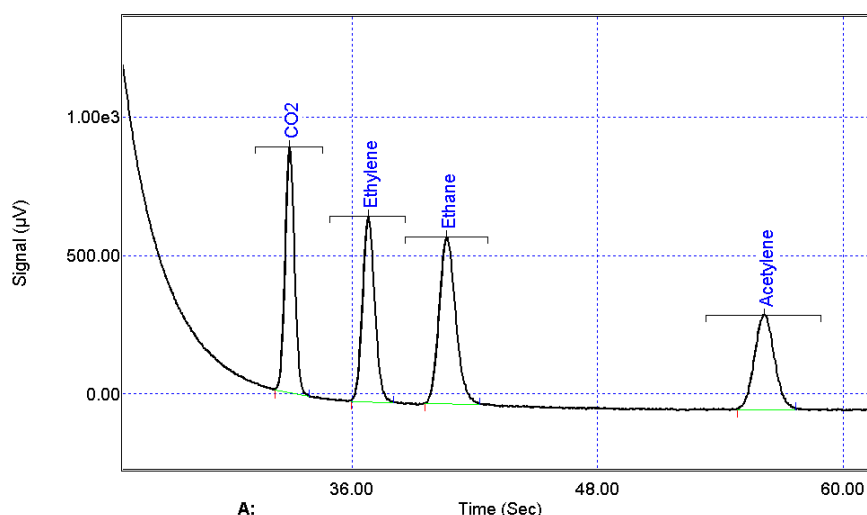
Injector : Variable volume

Column temperature : 70°C

Injection time : 90°C, 30 ms

Column pressure : 28 psi

μTCD sensitivity : Standard



The Micro-GC is a powerful solution that provides fast, accurate and easy-to-use solution to analyze your gas sample.

A wide range of capillary columns and MEMS injectors are available to optimize channel combinations inside the Micro-GC to obtain the desired separation. The μTCD is the high-performance universal detector used in such systems. A parallel analytical configuration of the channels or analytical modules will allow the sampling of a small amount of gas sample and simultaneous injection in all channels to develop up to 4 chromatograms and one cumulative report.

SRA Instruments is the ideal Partner with specific competences to develop with you turn key solutions based on optimized Micro-GC, accessories and dedicated software utility or report calculations for specific plant context.

| Compound | Concentration (ppm _v) |
|-----------------|-----------------------------------|
| CO ₂ | 505 |
| ethylene | 501 |
| ethane | 541 |
| acetylene | 499 |



More information : www.sra-instruments.com