

SOLVENTS ANALYSIS

Technique : Micro-GC

Column : InnoWAX

Carrier gas : Helium

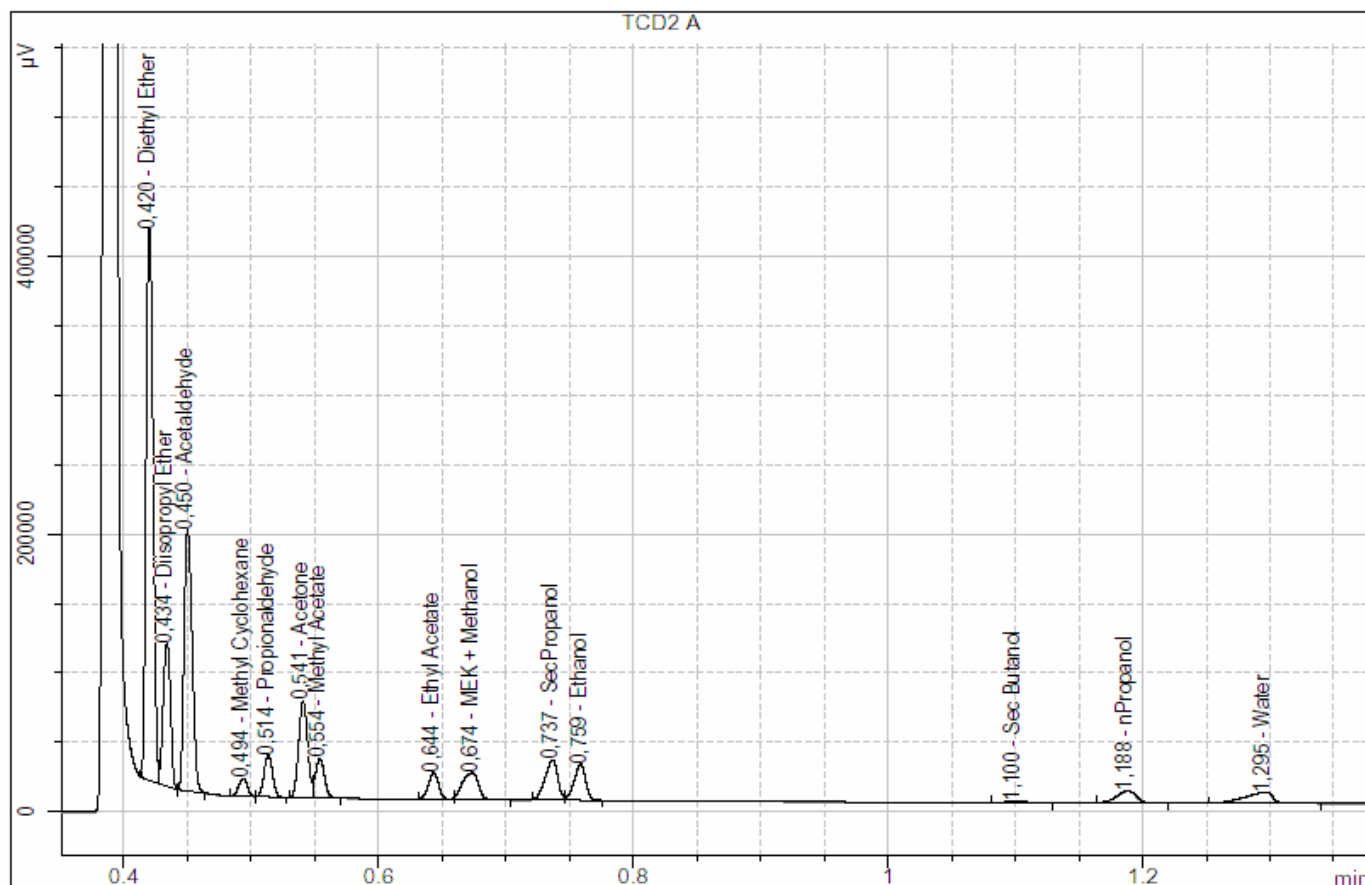
Column temperature : 50°C

Column pressure : 25 psi

Injector temperature : 90°C

Injection time : 50 ms

TCD sensitivity : High



- | | | |
|-----------------------|-------------------|-----------------|
| 1. Diethyl Ether | 6. Acetone | 11. Ethanol |
| 2. Diisopropyl Ether | 7. Methyl Acetate | 12. Sec-Butanol |
| 3. Acetaldehyde | 8. Ethyl Acetate | 13. n-Propanol |
| 4. Methyl Cyclohexane | 9. MEK + Methanol | 14. Water |
| 5. Propionaldehyde | 10. Sec-Propanol | |