

SOPRANE II

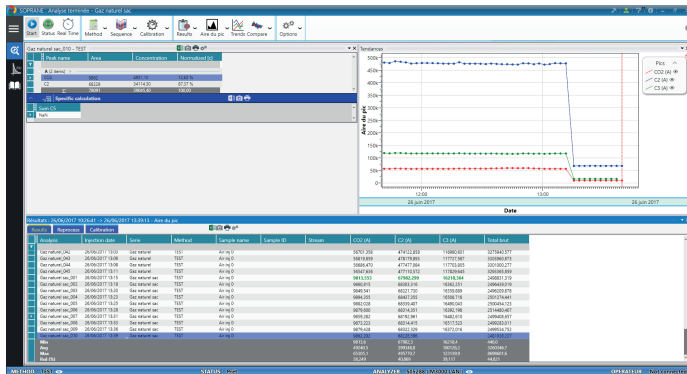
MULTI-INSTRUMENT SOFTWARE REFERENCE FOR THE MICROGC RANGE

Simplicity and performance, both in the laboratory and in the process

The first generation of the Soprane software has been a success for several years in the world of MicroGC, chosen by the largest companies for its unmatched functionality and ease of use.

The new Soprane II allows you to control several instruments at the same time, such as the most widely used MicroGC models on the market : 490 Agilent, 3000 series, CP4900 Varian and of course, the whole range of the MicroGC SRA Instruments analyzers.

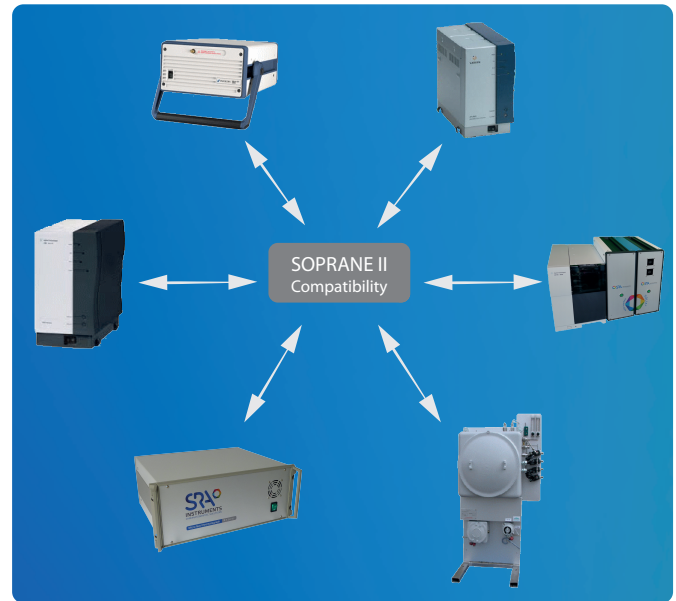
Always perfectly adapted to the on-line analysis and the needs of the laboratory, SOPRANE II benefits from a modern and efficient graphical environment, giving efficiency and easier use.



Main window of the software

Process software

Soprane II is designed to meet the automation needs in process environment. It integrates the control of selection valves or isolation valves, pumps ... It ensures the supervision of the whole of the sampling, the analysis and the transmission of the results by triggering alarms at the slightest anomaly. It is also possible to integrate external sensor data (pressure, temperature, humidity, etc.) into the results.



Powerful software and multi-instrument

Soprane II performs the complete management of an analysis, from the sampling to the transmission of the results. It integrates a dedicated module creation tool MicroGC, a complete integrator easily set using interactive graphical tools.

A chromatogram comparison module with curve display allows a quick visual analysis of the results.

Specific calculation can be obtained: calorific value, Wobbe index, density ... Customized calculations can also be set.

Multi-instrument is also available, allowing control of several MicroGC at the same time.

SOPRANE II
Clear results,
Reliable values



Application fields :

- Process
- Chemical, pharmaceutical
- Research
- Biogas, biomass
- Coupling
- Etc.



▶ Easy to use



▶ Many Features



▶ Compatibility for all MicroGC



▶ Automating



SOPRANE II

TECHNICAL SPECIFICATIONS

General specifications :

Windows Compatibility : Vista, Seven 32/64 bits, Windows 8, Windows 8.1 and Windows 10.

MicroGC Compatibility : Agilent 490, Varian CP4900, MicroGC 3000, all SRA Instruments MicroGC, ...

Multi-instrument : can control up to 4 instruments at the same time.

Sampling :

Stream selection : electro-valves, Valco valves, up to 16 streams

Piloting : auxiliary pump, mass flow meter

Automating :

Calibration : automatic multipoint calibration with average response coefficient for better accuracy.

Bake out : automated column regeneration programming

Methods :

Analyses : simple interface simple, dedicated MicroGC

Reprocess : integrator can be parameterized using graphic tools

Analyses modes :

Multi-stream : definition of sequences of analyzes by channel and calibration

Launch of analyses : punctual, series of n analyses, sequence, continuous, calibration, control sample, at a given time, at a given frequency

Specific calculations :

Natural gas : ISO 6976:2016, GPA 2261

LPG liquefied gases : ISO 8973, ISO 7941, ISO 6578

Others : combustion calculation, customized calculation

Reporting results :

Results table : customized with normalization, unknowns, groups, calculation results

Visualization : several trend curves can be set for each channel (concentration of compounds, calculation result, ...)

Report : manual or automatic, customized, multi-format

Data transmission :

Analog : 4-20mA, 0-1V, 0-10V

Digitals : Modbus (RS232/485,TCP/IP)

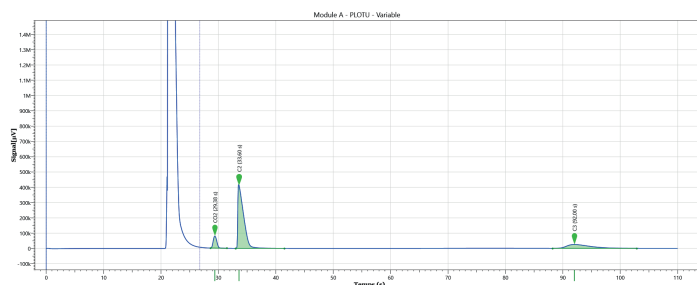
External signal inputs : analog, logic, external start

Alarms :

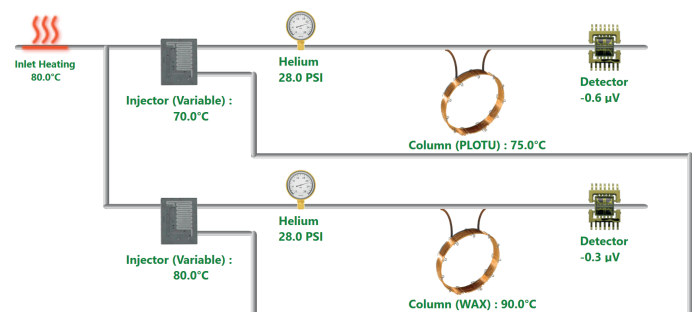
Types : configurable, general fault, compound alarm or concentration (gross, normalized, total, ...)

Customization :

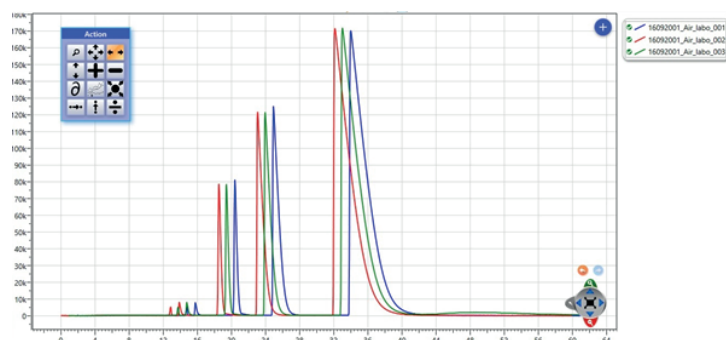
Windows service connectivity for automation, integration of external sources, client software interface



Process module Soprane II software



Instrument status display



Compare module Soprane II software

Find us on www.srainstruments.com