



Vocus CI Series

High-resolution chemical ionization with interchangeable reactors for demanding research applications



Bring the lab anywhere

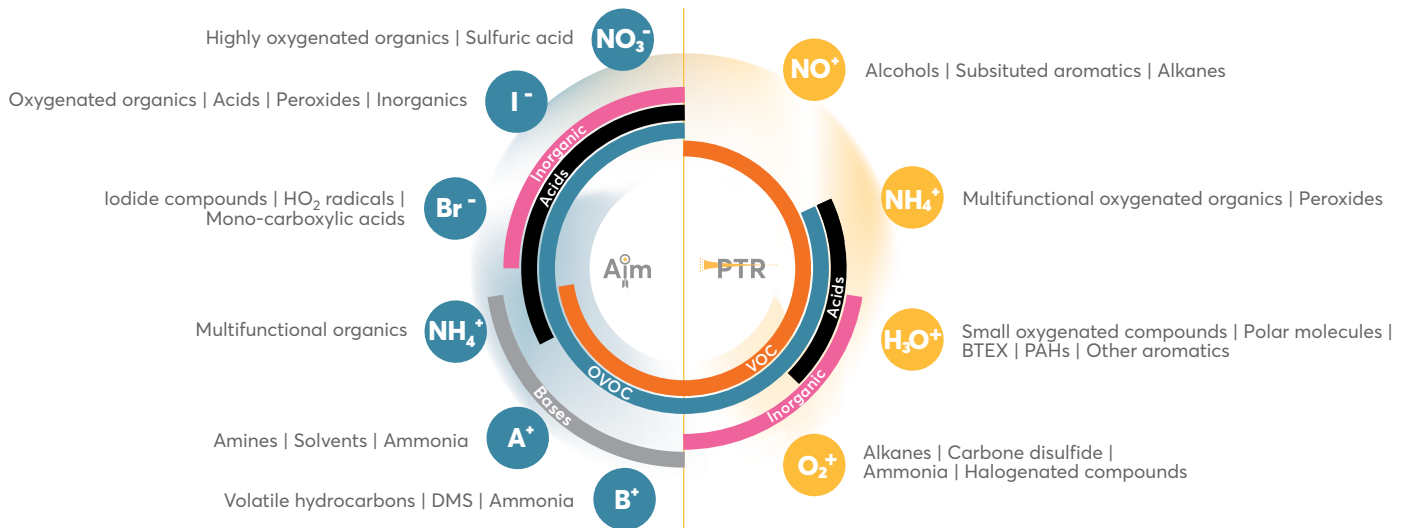
Fast, real-time analysis with sub-pptv limits of detection

High specificity with high mass resolving power

Compact, field-ready design

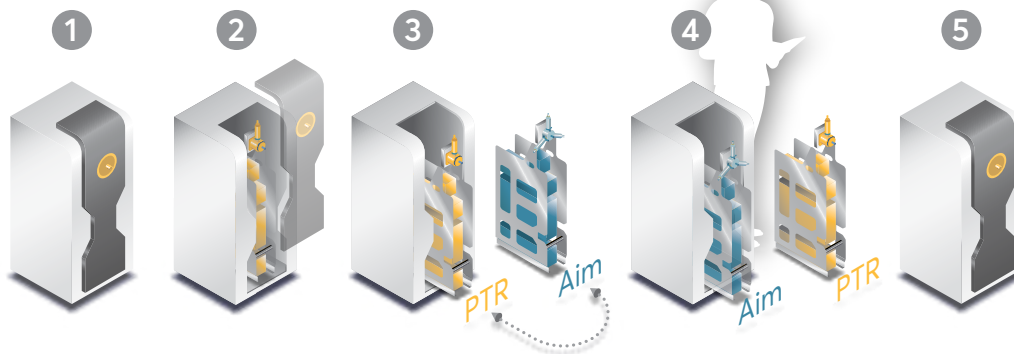
Interchangeable Reactors

Vocus CI Series mass spectrometers allow users to switch between the Vocus PTR Reactor for general VOC analysis and the highly sensitive, selective Vocus Aim Reactor, optimizing detection for target analytes or adapting to evolving research needs.



Related Applications

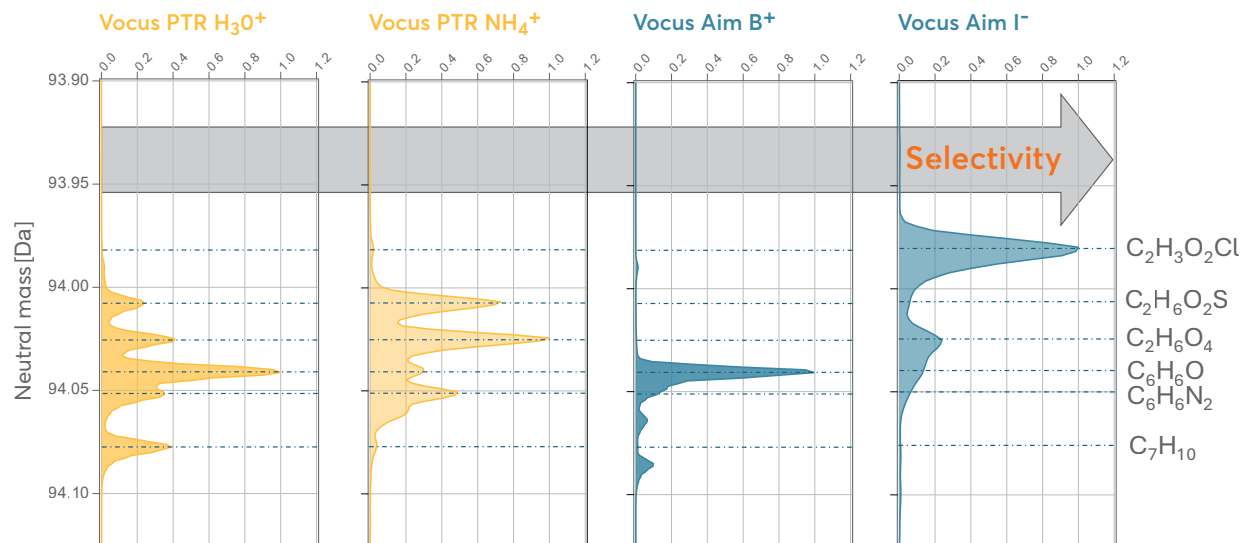
From atmospheric chemistry and plant studies to industrial monitoring, the Vocus CI Series delivers unmatched performance for challenging lab and field measurements.



The compact, modular design features drawer-like ion source modules for easy switching between CI reactors, with simplified maintenance protocols that ensure consistent performance in remote locations or demanding industrial environments.

Maximum Flexibility and Sensitivity for Demanding Research

Analyze everything from volatile precursors to complex oxidation products with unmatched performance. Two interchangeable reactor platforms and switchable reagent ions adapt to your specific research needs, delivering high-resolution, real-time detection with excellent peak shape down to trace levels.



The figure above compares a narrow mass spectral region of a complex air mixture measured by four chemical ionization schemes using the Flex 2R instrument ($R > 10,000$). Spectra obtained with the PTR Reactor illustrate broad VOC/OVOC coverage, whereas spectra from the Aim Reactor are less congested and easier to interpret due to higher selectivity.





Vocus CI Specifications

Model	Vocus Flex Scout	Vocus Flex S	Vocus Flex 2R
Sensitivity (cps/ppbv)	>4,000	>30,000	>30,000
LOD - PTR, Xylene, pptv, 1mn	<5	<1	<1
LOD - Aim, Levoglucosan, pptv, 1mn	<10	<1	<1
Resolution (M/ Δ M)	>4,000	>6,000	>10,000
Weight (kg) Power (W)	170 ~800	185 ~800	185 ~800
Dimensions (mm)	570 x 680 x 1,010	570 x 680 x 1,010	570 x 680 x 1,010

Vocus CI Accessories

Ion Mobility
Fast, sensitive isomer separation

Manifold Sampling System
Multi-port sampling for up to 36 locations

Liquid Calibration System
Direct calibration of instrument response using aqueous standards

Mobility System
Mobile cart and shock mount options

Gas Chromatography
Separate VOC isomers with ultra-low detection limits

*Accessory availability depends on instrument model.