



IC-20 series Ion Chromatograph

Introduction

The IC-20 series ion chromatography uses dual-piston serial pumps driven by independent motors, equipped with ultra-wide range digital conductivity detectors and high-performance, high-throughput autosamplers. The external water addition method of the suppressor expands the application field of the ion chromatograph and provides a cleaning function for the piston pump, thereby extending the service life of the pump.

Features

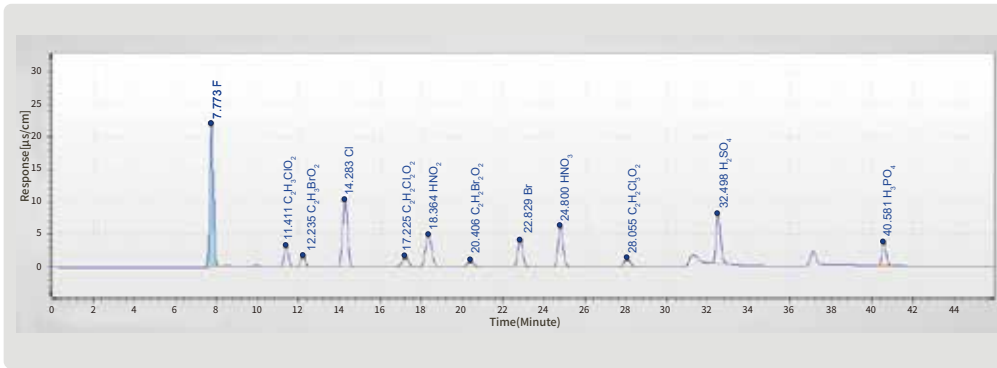
- ◆ Independently driven dual piston serial pump provide stable high pressure and small pressure pulsation. Fully inert PEEK pump head and flow path, compatible with 0-14 pH eluent, built-in plunger cleaning function.
- ◆ Digital conductivity detector, standard measuring range is 0-50,000 $\mu\text{s}/\text{cm}$ (optional 0-100,000 $\mu\text{s}/\text{cm}$), fully automatic range conversion, no manual setting required.

- ◆ Conductivity detector with resolution down to 0.001 nS/cm.
- ◆ Thermostated cell, temperature resolution up to 0.001°C.
- ◆ The conductivity cell can withstand pressure up to 10Mpa or higher.
- ◆ Controlled external water addition mode of the suppressor.

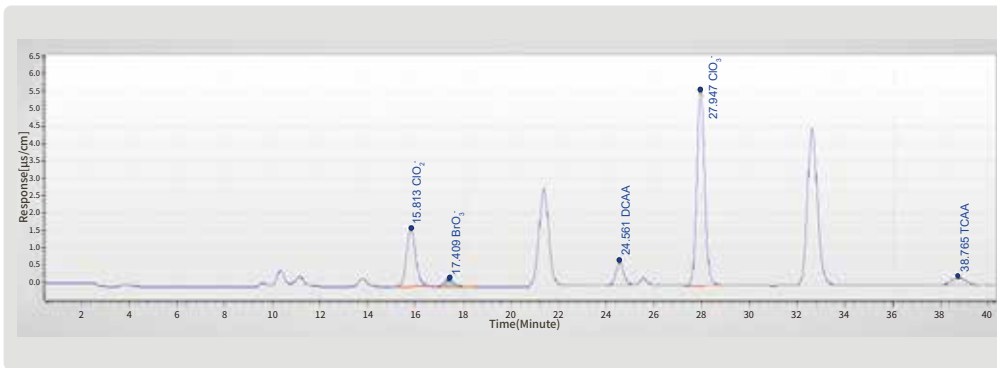
Specifications

Model	IC-20
Application areas	Marine, environmental, food, water quality, semiconductor, geological, pharmaceutical impurities, biological, cosmetics, drinking water, and other fields.
Detection Limit	ppb level
Flow Rate Range	0.01-5.00 mL/min (standard), 0.01-10.00 mL/min (optional, in 0.01 mL/min increments)
Flow Rate Accuracy	<0.2%
Pressure Range	0~5000psi (35MPa)
Pressure Pulsation	<0.1%
Column Compartment Temperature Range:	Room temperature +5°C to 80°C
Temperature Stability	±0.1 C
Software	EasySpec Workstation provides Instrument control and data acquisition/storage/processing, such as Chromatographic peak integration, qualitative analysis by retention time, peak area and concentration calculations, half-peak width calculation, and signal-to-noise ratio calculation.
Power Supply	220V ±10%, 50Hz
Instrument Dimensions	Bench top, modular stacking, 456mm * 420mm * 522mm (LWH)
Instrument Weight	43kg

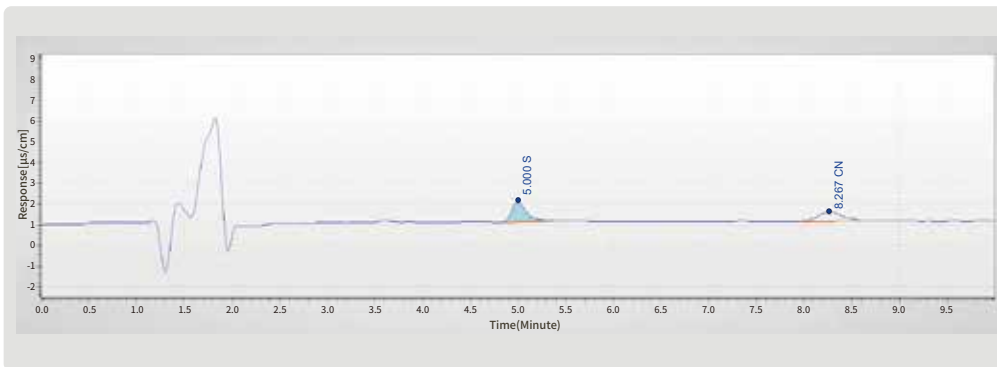
Applications



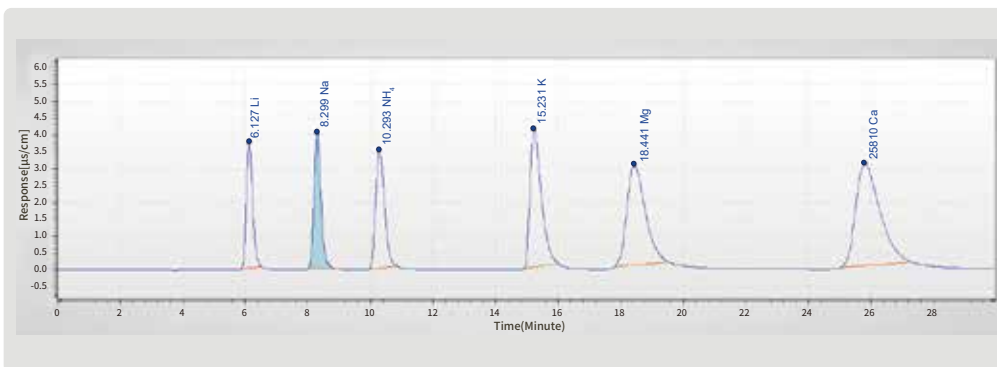
Detection of disinfection by-products in drinking water (seven anions + five haloacetic acids)



Five types of disinfection byproducts



Detection of Sulfide and cyanide in waste water and solid waste (Direct current ampere detector, 1 µg/L)



Detection of Conventional Cations